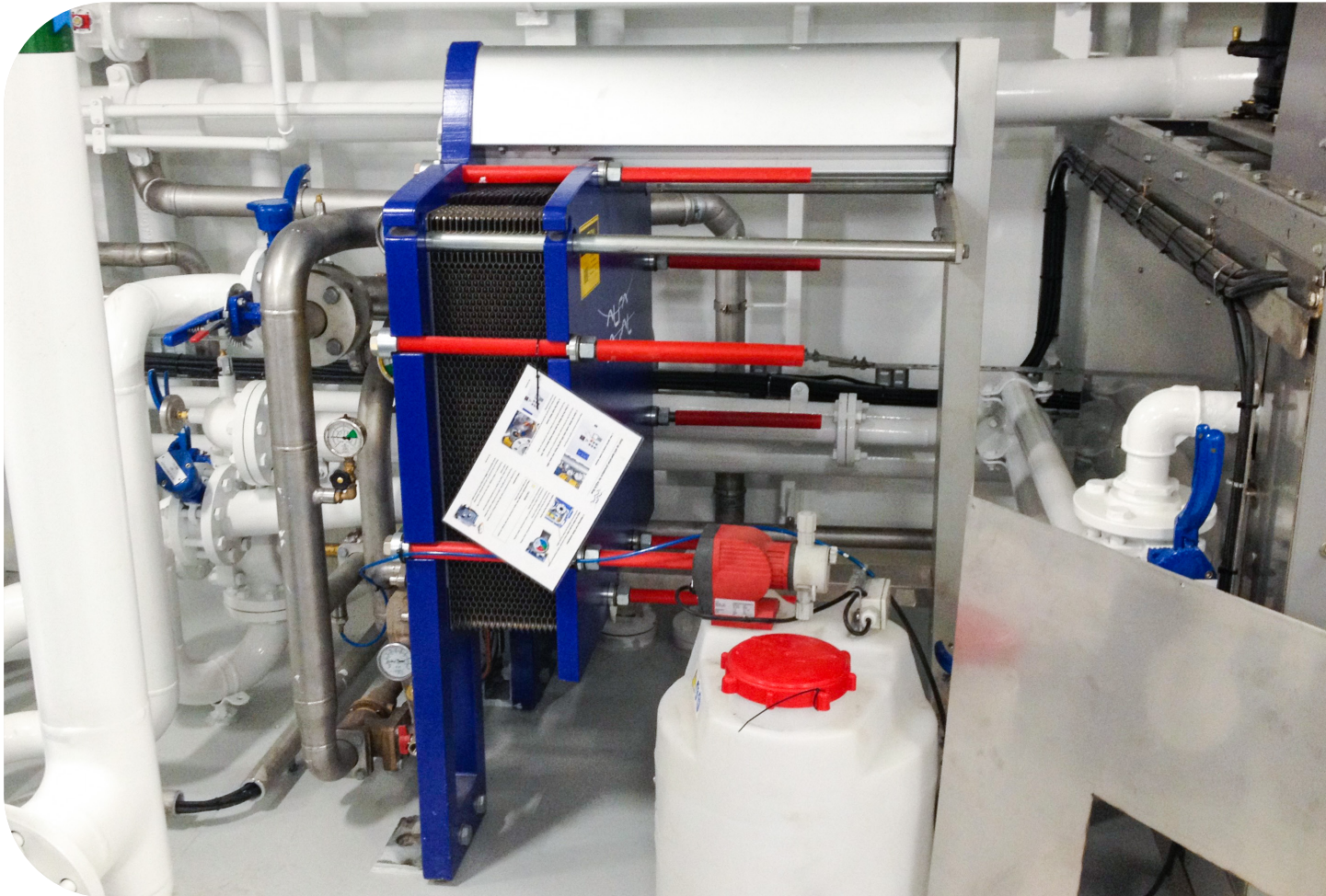
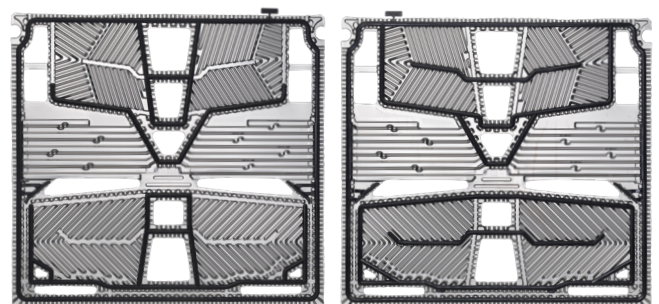


# Alfa Laval AQUA Plate Exchange

Trouble-free service and operation – maximum uptime



Having access to fresh water on board is essential. For your Alfa Laval AQUA Blue freshwater generator to function optimally over time, its AQUA plates need to be kept in good condition. Poor function due to surface issues or failing gaskets can lower your production, reduce safety, increase energy use and lead to costly downtime. Exchanging your existing AQUA plates for freshly reconditioned plates from our central stock is an easy and efficient way to safeguard performance and uptime.



Alfa Laval AQUA process plate

Alfa Laval AQUA utility plate



### What we do

We send you a good-as-new reconditioned AQUA plate pack, delivered to an agreed harbour location. You then return your used, undamaged AQUA plates in the box we provide. The used plates are reconditioned by experts at our service centre using our unique high-quality methods. Then we put them in our central stock, ready for our next customer – so there is never any waiting for new AQUA plates.

### Benefits

- Trouble-free plate maintenance
- No need for you to use special tools or chemicals
- Maximized uptime
- Continuous freshwater production
- Convenient business setup

### Scope of service

As proper regasketing of plates can be difficult to do on board, we offer to do this for you at a qualified Alfa Laval service centre. Upon receiving your old AQUA plates, our specialists clean them thoroughly. The gaskets and glue are removed using liquid nitrogen. The raw titanium plate is cleaned in chemical baths to remove any residue. Gaskets are glued with our special two-component glue, which is oven cured to secure an optimal glue bond. After a final quality inspection, the plates are put in stock and kept ready for our next customer.

### Scope of supply

We send you reconditioned AQUA plates from our global stock. New plates are delivered in a box, which you then use to return your old plates. This ensures that they are shipped safely to avoid damage in transportation, and it minimizes material waste.

Your used, undamaged plates need to be returned to us within three months. After three months, a price increase will be needed to cover our loss.

### Increase service intervals

AQUA Blue freshwater generators are designed for easy operation with minimal maintenance. However, there are ways to further extend performance and increase the interval between reconditionings.

- **Alfa Laval AQUA CIP (Cleaning-In-Place)**

The CIP unit is easy to install and use. Inhibited acid is circulated through the evaporator section of the plates to remove scale deposits, leaving a clean plate surface that provides optimal system performance.

- CIP 230V – item no. 985 23461-80
- CIP 115V – item no. 985 23461-81



- **Distance indicator**

Distance indicators are installed on tightening bolts to secure easy plate assembly, minimizing the risk of overtightening the plate pack and thus avoiding damaged plates.

- Distance indicator set – item no. 985 24150-80

Alfa Laval reserves the right to change specifications without prior notification.

### How to contact Alfa Laval

Up-to-date Alfa Laval contact details for all countries are always available on our website at [www.alfalaval.com](http://www.alfalaval.com).